



THE 2012 ANNUAL MEMBERSHIP MEETING AND AWARDS PROGRAM

James A. Foret Award

Richard Odom, (*top right*) Country Pines Nursery / Blessings Nursery, Forest Hill, LA was presented the 2012 James A. Foret Award by the Louisiana Nursery and Landscape Association at the annual membership meeting and awards program in Mobile.

The James A. Foret Award is presented annually by LNLA to an individual, or individuals, reflecting a lifetime dedication and support to LNLA and the nursery, landscape industry in Louisiana. It is the association's highest award given. Introduced in 1979, it is named after LNLA's first executive secretary, Dr. James A. Foret, longtime horticulture professor at ULL.

Richard has been owner of Country Pines Nursery, Forest Hill, LA since the early 1980's and served on the LNLA board of directors for ten years; including two years as president in 1989 and 1990. He was named LNLA Professional of the Year 1988 and has also received previously from LNLA a Professional Achievement Award for his release of the Crimson series azaleas.



Young Professional of the Year

Carruth Higgins (*pictured left*) was named the Louisiana Nursery and Landscape Association's Young Professional of the Year for 2012 at the recent annual membership meeting and awards program in Mobile. Carruth was presented the award by Todd Ellefson and Allen Owings at the LNLA social. Carruth is a two term past president of the Baton Rouge Landscape Association and is the owner of Bayou Scape.



Honorary Members—2012

Craig Roussel (*left*) and Severn Doughty, Sr. (*right*) are the newest honorary members of LNLA. Both were recognized at the LNLA annual breakfast meeting and awards program held at the Gulf States Horticultural Expo. Annie Coco (*center*), current LNLA interim executive secretary, presented the awards.



Professional of the Year

Roger Mayes (*bottom left*), owner of Louisiana Nursery Home and Garden Showplace, was named the Louisiana Nursery and Landscape Association's Professional of the Year, for 2012, at the recent annual membership meeting and awards program held in Mobile. Presenting the award was Walter Imahara (*bottom right*). Roger has served for many years on the Louisiana Horticulture Commission, as a board member for LNLA and has been active in public service and community support in the Baton Rouge area. Louisiana Nursery is recognized as a Top 100 garden center in the United States.

Your business will thrive with a little help from us!



FREE
Safety Gear Package offer!
Our Safety Gear Package comes with
Safety Glasses, Posters, First Aid
Supplies, and much more!
Contact us and mention you saw this ad
and receive your
FREE Safety Gear Package!

Put our expertise to work for you!

Louisiana Nursery & Landscape Association
proudly sponsors Meadowbrook Insurance Group
for your workers' compensation needs.

We can assist you with the steps necessary to
protect your business and save you money.



MEADOWBROOK
INSURANCE GROUPSM

(800) 726.9006

directsales@meadowbrook.com
www.wcpolicy.com/lnla



**Louisiana
Nursery &
Landscape
ASSOCIATION**

**2012 BOARD OF
DIRECTORS & OFFICERS**

Mission... To enhance the quality of life for people, conserve and protect the global environment, and promote the professionalism and profitability of the nursery and landscape industry in Louisiana.

President

Todd Ellefson
Windmill Nursery, LLC
PO Box 400
Folsom, LA 70437
(P) 800.535.1887, (F) 800.370.3854
(E) todd@windmillnurseryllc.com

Vice-President

Gerritt Monk
Forest Hill Nursery Farm, Inc.
353 N. Blacktop Extension
Oakdale, LA 71463
(P) 318.446.2020, (F) 318.748.6276,
(E) gmonk@foresthillnsv.com

Interim Executive Secretary

Annie Coco
11050 Hwy 441
Amite, LA 70422
(P) 985.789.4301
(E) acoco@agcenter.lsu.edu

Treasurer

Pat Newman
Folsom Nursery, Inc.
P. O. Box 580
Folsom, LA 70437-0580
(P) 985.796.3488, (F) 985.796.3488
(E) folsomnursery33@aol.com

Past-President

Peter Newton
Newton Landscape Group, Inc.
8930 Buzbee Drive
Baton Rouge, LA 70809
(P) 225.756.4321, (F) 225.756.4324
(E) pete@newtonlandscapegroup.com

Administrative Assistant

Laura Crnko
8409 Vincent Road
Denham Springs, LA 70726
(P) 225.667.4744,
(E) lcrnko@bellsouth.net

Director, Research & Education

Allen Owings
LSU AgCenter, Hammond Research Sta.
21549 Old Covington Hwy.
Hammond, LA 70403
(P) 985.543.4125, (F) 985.543.4124
(E) aowings@agctr.lsu.edu

Director, Training

Dan Gill
LSU Plant, Environmental & Soil Science
155 J.C. Miller Hall
Baton Rouge, LA 70803
(P) 225.578.2413, (F) 225.578.0773
(E) dgill@agctr.lsu.edu

Director, Associate (14)

Brian Bridges
BWI Co., Inc.
PO Box 610
Forest Hill, LA 71430
(P) 318.748.6361, (F) 318.748.6704
(E) brianbridges@bwicompanies.com

Director (14)

Margie Ann Jenkins
Jenkins Farms & Nursery, LLC.
62188 Dummyline Road
Amite, LA 70422
(P) 985.748.7746, (F) 985.748.8219
(E) jfandn@l-55.com

Director (14)

Robert 'Buddy' Lee
Transcend Nursery
52063 Ridge Crest Drive
Independence, LA 70443
(P) 985.878.3567
(E) buddyzaleas@yahoo.com

Director (14)

Mark Murrell
Murrell Trading Co., Inc.
30185 Hwy 1 South
Bayou Goula, LA 70716
(P) 225.545.3336, (F) 225.545.3725
(E) mmurrell@wildblue.net

Director (14)

Tom Fennell
Clegg's Nursery
5696 Siegen Lane
Baton Rouge, LA 70809
(P) 225-937-5465
(F) 225-292-9158
(E) tefennell@cleggsnursery.com

Director (13)

Rick Cicero
Cicero's Gardens
1017 Nursery Avenue
Metairie, LA 70005
(P) 504.469.4292, (F) 504.469.4258
(E) rick5250@bellsouth.net

Director (13)

John Kavanaugh
Kavanaugh's Landscaping
11695 Clay-Ansley Hwy.
Ruston LA, 71270
(P) 318.255.4340

Director (13)

Buddy Perino
Perino's Garden Center,
3100 Veterans Memorial Blvd.
Metairie, LA 70002
(P) 504.834.7888, (F) 504.837.0791
(E) buddyperino@gmail.com

Director (13)

Renee Vanlangendonck
Chambers Tree Farm and Nursery
P.O. Box 391
Lecompte, LA 71346
(P) 318.715.1313, (F) 318.776.1313
(E) renee@chamburnursery.com

Inside this issue:

Position Announcement	5
Ornamental Update	6
Bioswales	10
LNLFSSR Scholarships	11
NEW Plant Hardiness Zones	12
Lace Bugs	18
Post-Emergence Herbicides Limited	21
Calendar of Events	26



**Azalea
Symposium**

8:30 am – 3:00 p.m.

**Thursday
April 4, 2012**

Hammond Research Station

21549 Old Covington Highway (Hwy 1067)
(off Hwy 190 next to Lynhaven)

\$20 / person (please RSVP) with lunch & snacks provided
985.543.4125 or aowings@agcenter.lsu.edu

Buddy Lee – Encore Azalea Breeder
Pat Newman – Manager, Folsom Nursery
Rick Webb – Native Plant Nursery Owner
Allen Owings – LSU AgCenter

*Information on the newest Encore azaleas for 2012!
New Southgate Rhododendrons!
History of Azaleas in Louisiana!
Getting the Best Landscape Performance!*


Event co-sponsored by the LSU AgCenter

Azalea Society



NEWS, VIEWS & THANK YOU'S




 January 2012

Dear LNLFSR Scholarship Committee:

Thank you so much for choosing me as one of your scholarship recipients! This \$1000 comes at such a critical time when I need to pay \$1200 in non-tuition fees for the spring semester. I am so enjoying working on my Master's Degree, and I really appreciate the recognition you have given me.

Sincerely,
Jason Stagg

 January 21, 2012

Dear Louisiana Nursery and Landscape Association:

Thank you very much for your generous \$1000 scholarship. I was both very honored and very grateful to have received it. I look forward to using those funds to further my horticultural education and experiences. Also, thank you for a delicious breakfast and banquet! I am so happy to be working in such an exciting field and this scholarship will help me continue. Have a wonderful year!

Sincerely,
Maureen Thiessen

 December 13, 2011

Dear LNLA Board Members,

After almost 27 years of service as Director of the Horticulture Commission and Horticulture & Quarantine Programs for the Louisiana Department of Agriculture & Forestry (LDAF), I am planning to retire effective December 31, 2011. However, this retirement has enabled me to accept a position with the LSU AgCenter as an Extension Agent in Ascension Parish doing primarily horticulture work, pending final approval. Upon graduating from LSU in 1975, I started my career with the AgCenter as a Research Associate for 1.5 years, then worked with Extension Service for 8 years before coming to LDAF. Now my life has come full circle and I will again join the AgCenter Extension staff where I hope to finish my career. I have always truly enjoyed Extension work and felt a desire to return one day. I grew up on a vegetable farm in St. James Parish and was around the Extension Service all of my life beginning as a very active 4-H Club member. There is a picture on my wall that is actually a 1950 Extension Service publication titled "Louisiana Shallots". On the cover is my father, his brother, their uncle and the County Agent at a packing shed with shallots being packed for shipment in oak barrels. When I look at that picture it reminds me of my love for Extension work. Although I am sad to be leaving LDAF, particularly my staff, I am very excited about the work that awaits me.

I certainly appreciate the opportunity that LDAF provided me. It has been a long and fulfilling journey. I have enjoyed working with you individually and as a group. Much has been accomplished over the years including, but not limited to, the adoption of sod standards and standards of practice, continuing education, and licensing of additional professions, not to mention addressing countless pest issues such as citrus psyllids, citrus greening, sudden oak death, Japanese beetle, and pink hibiscus mealy bug. I will always cherish the relationships and friendships devel-

A Word from our President

I would first like to thank everyone and let you all know what a privilege it is to serve as your president for the past year as well as the upcoming year. We have accomplished a lot this past year and look forward to working with the board to strengthen LNLA for the future.

Spring is now upon us and it seems that there is a different feeling in the air this year. Maybe excitement or maybe cautious optimism but, for whatever reason, I feel that we are all going to have a good and prosperous year. It feels like we have weathered the storm and this industry will begin to make strides again to being the industry that we are used to working in.

I want to send a special thank you to Dr. Severn Doughty for his support and work with the board in the past. He was recently recognized at the Gulf States show for his service to the association and to the industry. The association would not be where it is today if it were not for his guidance and leadership. Thank you Severn.

I wish the best for all of you and to a prosperous 2012.

Sincerely,


Todd Ellefson
President



oped over the years. I would like to thank both Commissioner Strain and Commissioner Odom for providing me the opportunity to serve the agricultural/horticultural industries and the people of Louisiana.

Hopefully, our paths will cross in the future.

Thanks,
Craig Roussel

 January 23, 2012

Todd,

On behalf of Ansel and myself, I wanted to again thank you and the LNLA Board for providing us the opportunity to attend the recent Gulf South Horticulture Expo in Mobile. Your generous support enabled us to participate in this important regional show. It also gave me the chance to meet certain LNLA Board members for the first time while interacting on a more personal level with those I have known for some time.

Although the directorship in Horticulture & Quarantine has changed hands, LDAF's commitment to serve Louisiana's green industries to the best of our ability will continue. Nothing has changed in that regard. I look forward to working with you, the Board and the industry in the future. Please feel free to contact me or any of our staff with any issues or concerns that may arise.

Thanks again!
Sincerely,
Tad Hardy, State Entomologist
Director, Horticulture & Quarantine Programs
Louisiana Department of Agriculture & Forestry

(Continued on page 22)



POSITION ANNOUNCEMENT

LNLA Executive Secretary

The Louisiana Nursery and Landscape Association seeks to employ a part time to full time (25-40 hours/weekly) Executive Secretary to administer daily activities of this non-profit association that serves the "green industry" of Louisiana. Responsibilities will include:

- recording/maintaining board, membership, and executive committee minutes.
- handle necessary daily correspondence via e-mail, fax, phone, letter, social media, etc. in a timely manner.
- maintain regular communication with the Louisiana Department of Agriculture and Forestry, Louisiana Farm Bureau Federation, LSU AgCenter, Southern Nursery Association, American Nursery and Landscape Association, and nursery/landscape associations in neighboring states on important industry issues, trade shows and educational seminars.
- serve as executive secretary for the Louisiana Nursery and Landscape Foundation for Scholarship and Research.
- attend in-state regional nursery and/or landscape association and horticulture events as a representative of LNLA.
- handle all necessary arrangements for quarterly board meetings of the association.
- schedule, reserve sites, make arrangements for all LNLA activities and participation in the Nursery/Landscape Expo (annually in August in Texas), Gulf States Horticultural Expo (annually in Mobile), Mid South Green Industry Conference (annually in June in Mississippi) and others events as requested by the executive committee and/or board of directors.
- see that financial records are properly maintained in coordination with the elected treasurer and accountant agency.
- oversee management of the LNLA website (www.lnla.org).
- work with the administrative assistant and others to assemble information for the quarterly newsletter, membership directory, buyer's guide (if produced) and similar publications.
- work with the LNLA board in coordination of awards and scholarship programs and provide oversight in the process.

(Continued on page 26)

WESTFARMS NURSERY

**A COMPLETE WHOLESALE NURSERY FOR
THE LANDSCAPER AND RETAIL BUYER**

Container Grown
Azaleas
Trees
Hollies
Ornamentals



*Hybridizer of Daylilies
for Landscapes
of Distinction*



Dale & Lynette Westmoreland
13529 Hwy 450
Franklinton, LA 70438
Ph/Fax: (985) 839-5713





LSU AgCenter Ornamental Update

Ball Horticulture Event

Ball Horticulture held a "Ball Horticulture University" at the LSU AgCenter's Hammond Research Station last fall. It was great to see presentations on new plant varieties coming for 2013 and beyond.

PanAmerican Seed introduced the audience to the Pretty Grand and Pretty Flora series of petunias. In addition, there is a Black Cherry addition to the Debonairs and a Blackberry and Lime Green coming in the Sophistica petunias. Serenita angelonias are new for 2013 and will include lavender pink, purple, raspberry, white and a mix. Black vinca! Yes. The Jam and Jellies will include a Blackberry variety.

BabyWing begonias will be a Louisiana Super Plant this spring. Coming for May 2012 will be the new addition to the series – a white, bronze-leaf variety. There is a new strawberry addition coming to the Double Zahara zinnia. A new Cheyenne Spirit mixed colors seeded Echinacea will also be debuting soon, and I believe it is an AAS winner for 2013. A new digitalis is the Dalmation series with cream, peach and rose flower colors. Will this replace the Camelots?

More Liriope Stuff

'Marc Anthony' is a new release from Plant Development Services, Inc. (PDSI), Loxley, AL. It is an improved variegated foliage cultivar with new foliage originating as golden yellow and green. Foliage becomes white and green when maturing. Lavender blooms peak in mid-summer. It is reported to reach 16" tall. USDA hardiness zones 5-9. Recommended for full sun to partial shade.

'Emerald Goddess' is from Rode Groundcovers in Florida and has lavender flowers. It is taller growing than most *Liriope muscari* cultivars maturing at a height of 18 inches in Louisiana plantings. It is fast growing. It has superior resistance to common fungal diseases. Dark green foliage is retained in winter and upright blades. Floral display is improved also. USDA hardiness zones 5-10.

'Super Blue' is a new phenotypic selection from 'Big Blue'. Has much more vigorous growth than other 'Big Blue' selections. It is a taller growing *Liriope muscari* and keeps excellent bright green upright foliage in the winter. It is a slightly taller form than 'Emerald Goddess' This variety was developed by KPS Sales. USDA hardiness zones 5-9.

'Emerald Goddess' and 'Super Blue' have good resistance to disease making them excellent landscape plant suggestions.

How do you get the best out of liriope in your landscape:

- Select the best performing varieties.
- Match your sun / shade situation with the variety being planted.
- Make sure landscape beds are raised and well drained.
- Limit irrigation to lessen crown rot and anthracnose disease.
- Prune liriope in the late winter prior to new leaf blade growth emergence.
- Fertilize annually in the spring with a slow-release landscape fertilize.

(Continued on page 7)



"QUALITY PLANTS"



GEORGE JOHNSON

NURSERY, Inc.

MEMBER
A.N.L.A. • L.N.L.A. • T.A.N. • A.N.A.
O.N.A. • S.N.A. • N.C.A.N




3848 Highway 112
Forest Hill, LA 71430
Phone: 1-318-748-6715
Fax 1-318-748-6893
Toll Free 1-888-755-5653
<http://www.growit.com/geojohnsy>

Container & Field Grown Material

George M. Johnson, Jr.
Owner
Murphy Johnson
President
Mark Lachney
Manager
Linda Prosha
Assistant Manager

Ornamental Update (Continued from page 6)

- Thin plantings, especially in border situations, once every three years to maintain vigor.

Kordes Roses

In regard to roses, I visited with Mark Chamblee, owner of Chamblee's Rose Nursery, Tyler, Texas, at the Gulf States Horticultural Expo in Mobile, Ala., last week. He is growing the following 16 varieties of Kordes roses.

Blue Girl	Carmella Fairy Tale	Cream Veranda	Flamingo Kolorscape
Golden Fairy Tale	Iceberg	Innocencia Vigorosa	Lemon Fizz
Lions Fairy Tale	Mandarin Ice	Milano Kolorscape	Raspberry Vigorosa
Roxy Sun Sprite	Salmon Vigorosa	Seminole Wind	Westerland

Kordes is international and one of the world's oldest rose-breeding companies. Since 1990, the company terminated using chemical fungicides in its programs and is now seeing many positive results in terms of disease-resistant varieties.

We will be planting these 16 available varieties in no-fungicide spray trials at the Hammond Research Station in late February or early March 2012. You will notice a few familiar varieties, such as Iceberg and Seminole Wind.

Lemon Fizz is being highly praised for disease resistance in the southeastern United States by knowledgeable rose-growing enthusiasts. It is a yellow bloomer.

Fairy Tale Roses are Kordes' answer to David Austin. The plants carry heavily double blooms on vigorous, easy-to-care-for shrubs with great disease resistance.

Vigorosa Roses are a group of vigorous, continuous-blooming, healthy, landscape and ground cover roses in a range of vibrant colors. Fragrances are slight. Several of these varieties are Gold and Silver Medal winners. All are suitable for mass plantings, but some would make lovely specimens on their own. Heights and growth habits vary.



Article provided by Allen Owings, professor of Horticulture, Hammond Research Station, Phone 985-543-4125, Fax 985-543-4124, Email aowings@agcenter.lsu.edu

Jenkins Farm & Nursery, L.L.C.

Mark Jenkins Nursery

Container and field grown shrubs and trees, including the following:

♦ Wide variety of Azaleas ♦ Sasanquas ♦ Gingers ♦ Palms ♦ Native Shrubs and trees ♦ Ground Covers ♦ Large Native Azaleas ♦ Japanese Magnolias ♦ Japanese Maples ♦ Cleveland Select Pears ♦ Native Yaupon ♦ Parsley Hawthorn ♦ Pine Straw

“Make this your one stop for Landscaping needs”

62188 Dummyline Road, Amite, LA 70422

Phone (985)748-7746 ♦ (985)748-6177 ♦ Fax (985)748-8219

LNLA extends a warm WELCOME to the following NEW Members...

- BioGreen USA, Inc. Brad Huff
- Delgado Community College Virginia Wilson
..... Heather Rosenburrough
- Gomez Pinestraw George Gomez
- Grandplace Nursery Ped Kingkeo
- J & S Nursery Sharon Jaubort
- Knippers Plant & Garden Service ... Gary Knippers
- Rick McAnn's Shape-A-Scape Richard McAnn
- Russell Simmons Russell Simmons
- Southern Accent Lndsp & Lawn Kevin Taylor
- Urban Green Gary Wilkinson

NOTES FROM THE SECRETARY

Hi to LNLA Members,

I am Annie Coco, serving as Interim LNLA Executive Secretary, as of January 1, 2012. Former LNLA Executive Secretary, Dr. Severn C. Doughty, resigned in December 2011. I wish to express my thanks to Severn for his assistance in this transition period. The announcement for the position of LNLA Executive Secretary is located in this newsletter. If you or someone you know is interested, please respond accordingly. The deadline for applications is April 15, 2012.

I have served as SELNA (Southeast Louisiana Nursery Association) Secretary for many years, and it has been an enjoyable, and very busy, experience taking on the LNLA Executive Secretary position. Please bear with me as I learn my new responsibilities. I heartily thank Pat Newman and Allen Owings, along with several others, for their guidance and help. Don't hesitate to contact me at acoco@agcenter.lsu.edu or 985-789-4301 if I can be of assistance to you, or if you have suggestions or requests for LNLA. This is your association and I welcome input from you.

I hope you will join us for the third annual Gala on Friday, June 22, 2012, at the LSU Stadium Club in Baton Rouge to raise funds for scholarships and research. We'll "pass a good time" with an entertaining speaker and an auction of varied items. Invitations will go out in the not too distant future. Mark the date on your calendar.

The first CNLP (Certified Nursery & Landscape Professional) Review & Exam for 2012 was held on March 1-2, at the Hammond Research Station. Twenty-three people attended the first day of the review, and a few more came on the second to retake an exam. The second and only other CNLP training for this year will be on August 2-3 in Lafayette, La. See the form elsewhere in this newsletter or on the lnla.org website to sign up if you, or someone you know, want it. This training course originated as a continuing education opportunity for those in the nursery and landscape industry to refresh and/or increase their knowledge of horticulture and the industry. However, because the same manual that is used for this certification is also the one recommended by LDAF for preparation for some of the horticulture licenses in Louisiana, it also serves as an excellent short course for those who wish to become licensed. I thank and commend Dan Gill for his time and effort in conducting this training for LNLA.

Later,

Annie Coco
Interim Executive Secretary
Phone 985.789.4301
Email acoco@agcenter.lsu.edu



BRAUN HORTICULTURE
"A Quality Product for Professional Tree Handling"

Continuous Wire Baskets™
Visit us on the web at WWW.BRAUNGROUP.COM

Pick a Daisy

The Daisy® - fast, secure, economical packaging of any shape rootball.

The Continuous Wire Basket is "made to measure and made to fit"

Wire Baskets for
OPTIMAL - ROKOR - DUTCHMAN - STOCKER - VERMEER - BIG JOHN - CLEGG - CARETREE - BURKEEN - SHORT BASKETS - 22", 25", 30"

"BALLBOY"
Makes a Perfect B & B Package
One "pigtail" crimp tightens wire lacing to form a very professional package.

tailorfit
Reduction in labor. Proven quality basket.

Practical Economical

Call our TOLL FREE number for advice on ANY basketing question or problems.

UNITED STATES
PHONE (888) 732-7286
FAX (716) 282-6103

CANADA
PHONE (600) 246-6984
FAX (905) 648-8441

VIDEO ON REQUEST

REGIONAL REPORT FROM GREEN INDUSTRY ASSOCIATIONS

► BATON ROUGE LANDSCAPE ASSOCIATION

The Christmas meeting of the Baton Rouge Landscape Association was held on Thursday December 8th at the Steele Burden Memorial Orangerie at Burden Center in Baton Rouge. Neil Odenwald was the invited guest speaker. The meeting was sponsored by Dennis Vidrine at Wright and Percy Insurance. Officers were elected for 2012. Carruth Higgins was recognized for his service as president the past two years. New officers are President - Kurt Ducote, Vice President - John Doucet, Secretary - Elena Fennell, and Treasurer - Darnell Doucet. Board members elected were Doug Alexis, Candace Aiken and Zefferino Vonkurnatowski. Jeff Kuehny was re-elected the director of education.

► NEW ORLEANS HORTICULTURE SOCIETY

Hello Everyone! I would first like to thank everyone who attended the January meeting at Perino's Garden Center. We had a great turnout and we even had some new members join the society. Many thanks to Lisa Loup for the incredible catering and to Buddy and Peter Perino for hosting the event at their beautiful nursery.

Our last meeting was held Thursday, February 23rd at 7:00 p.m. at the Garden Study Center in the New Orleans Botanical Gardens. The speaker for this meeting was Pat Newman. Pat is the owner of Folsom Nursery and is an expert on Azaleas. The title of her presentation was "Azaleas, The Backbone Shrub of the Southern Garden".

Believe it or not we finally moved into the 21st century. All correspondence will be communicated by way of e-mail from now on.

Let us know what interests you. Your input is always welcome. Please ask your fellow green industry professionals to join the NOHS.

Please email NOHS@agcenter.lsu.edu for the 2012 membership form or more information on NOHS and upcoming meetings. Your support is greatly appreciated. See you soon!

► SELNA UPDATE:


The SELNA Spring business meeting is tentatively scheduled for April 10, 2012, in Folsom. A Trade Show committee meeting will take place a week or so before that, to decide on recommendations for the 2012 Trade Show, which will be September 28 (Friday), 2012, at Magnolia Park in Folsom, La. Plans for the Show will be presented by the trade show committee at the Spring SELNA meeting.


At the Fall SELNA meeting, a new set of Articles and By-Laws were adopted. As a result, new Board members will be elected at the spring SELNA meeting. The annual Crawfish Boil will also be discussed the Spring SELNA meeting.

In January, about a dozen SELNA members exhibited at the Gulf States Horticultural Expo in Mobile, Ala. Several more attended the event. Former SELNA President, Todd Ellefson, and member Pat Newman were elected at the LNLA Annual Membership Meeting to continue as President and Treasurer, respectively, of LNLA. Annie Coco, SELNA Secretary for many years, was hired as Interim LNLA Executive Secretary until a permanent Executive Secretary is selected. Congratulations to all of them!

Contact Annie Coco, SELNA secretary, at acoco@agcenter.lsu.edu or visit our website at www.selna.net for a list of plants available from our growers.

Don't guess. Soil test!



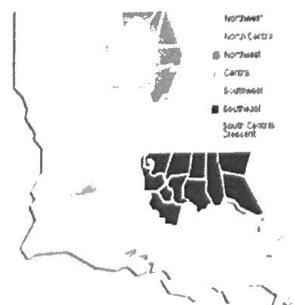


LSU
AgCenter
RESEARCH & EXTENSION

Soil Testing & Plant Analysis Lab

Learn the right combination of fertilizer, sulfur, lime or other ingredients for your soil. The LSU AgCenter Soil Testing Lab is the only lab that makes fertilizer recommendations based on Louisiana-specific research.

For more info, visit: LSUAgCenter.com/SoilTest



Support Louisiana's green industry by joining your regional association. Contact the following:

BRLA: Elena Fennell, Secretary, (E) ecfennell@cox.net

CLNA: Myra Poole Maloney, President, PO Box 485, Forest Hill, LA 71430-0485, (P) 318-748-6527, (E) hcn418@aol.com.

NOHS: Russell Harris, Secretary, (E) nohs@agcenter.lsu.edu

SELNA: Annie Coco, SELNA Secretary, PO Box 848, Amite, LA 70422 (P) 985.789.4301, (E) acoco@agctr.lsu.edu



Landscape Design Sketchbook

-green laws, design principles, designer plants-
Buck Abbey, ASLA
Associate Professor, Robert Reich School of Landscape Architecture
Louisiana State University

"A stormwater management plan must be submitted and approved as part of the landscape plan..."
Chapter 23 New Orleans CZO, Landscape Ordinance, 2011.

Designing Bioswales

Landscape codes across the nation are changing to support sustainable landscaping practices such as illustrated in the LSU AgCenter's *Louisiana Yards & Neighborhood Program*. Landscape ordinances in Louisiana are no exception.

Both the Hammond, Louisiana ordinances as well as the draft landscape ordinance, Chapter 23, Comprehensive Zoning Ordinance, being developed by the City Planning Commission of the City of New Orleans are showing a new trend toward on-site stormwater management as a component of their landscape code.

Other cities in Louisiana are also looking at modifying their landscape code to reflect new sustainable practices. One of the most recent is the Unified Development Ordinance of the City of Zachary. St. Tammany Parish has introduced some new on-site drainage requirements and the City of Mandeville a few years ago built a couple of green parking lots following some general principles of stormwater design involving porous paving.

The Muses Apartment Homes were recently designed at 1720 Baronne to achieve a LEED rating. **Landscape Architect Keith Scarmuza** of the Mathes, Brierre Architects designed a parking lot featuring rain gardens, porous paving in which storm water runoff was directed to landscaped swales and 50% of it was not allowed to leave the site.

In addition, the landscape code from East Baton Rouge Parish *Chapter 18, Landscaping, Clearing and Trees, Unified Development Code* was upgraded a little over a year ago to improve water quality and reduce the amount of non-point pollutants running off from paved areas and parking lots.

Landscape architects in Louisiana are following the principles of sustainable landscape design as set forth in the LYN program as well as LEED type standards in the new SITES program as proposed by Executive Order and the Council

of Environmental Quality (CEQ) of the Obama White House.

These new guidelines, *Guidance for Federal Agencies on Sustainable Practices for Designed Landscapes*, were released in October. They supplement the SITES guidelines being developed by the American Society of Landscape Architects, the U.S. Botanic Garden and the University of Texas- Ladybird Johnson Wildflower center.

The Hammond code, *Chapter 9- Building and Building Regulations, Article VIII, Landscaping, Clearing, Fill and Urban Forestry*, regulations set forth criteria for 'filter strips' in or around parking lots. These building regulations require that "a portion of the drainage from the parking areas shall be drained through swales in the road frontage landscape strip". The code suggests that deep rooted, perennial, ornamental grasses be used to slow the runoff, filter out sediments and infiltrate some of the storm water into the water table.

This is a classic code definition of a "bioswale."

Bioswales

Bioswales are open channels that convey water from a point of collection to a point of disposal. This is a standard component of a landscaped drainage system that is being designed by landscape architects, working with civil engineers and wholesale growers who can supply special plants that can be planted in wet soils and periodically flooded.

They are often planted with a mix of wetland facultative or obligate wetland plants designed as either a naturalistic planting or an ornamental planting

Bioswales are being used across the nation because as a sustainable landscape design tool that improves the water quality of parking lot runoff.

Vegetated swales clean, infiltrate and filter storm water as it passes through on its way to a point of storage or disposal.

(Continued on page 19)

2012 SCHOLARSHIP AWARD RECIPIENTS

Congratulations to the following students upon receiving a LNLFSR Scholarship (*Pictures are listed in order, top to bottom*). Scholarships were presented by LNLA director, Rick Cicero, during the annual membership meeting at GSHE, Jan '12.



Amanda Beeren - LNLFSR Scholarship

Amanda is a candidate for a Masters of Landscape Architecture in the School of Landscape Architecture at LSU. She is a native of Pittsburgh, PA and is a resident of Baton Rouge. She is a ASLA student member and has been recognized by the La Society for Horticultural Research and the National Garden Club Federation with scholarships in the past.



Sarah Caldwell - LNLFSR Scholarship

Sarah is a resident of Choudrant, a graduate of Ruston High School and is a senior in the agricultural business / landscape and turfgrass management program at Louisiana Tech University. She is the secretary of the Greenscape Club at Louisiana Tech and worked an internship at Diversified Services in El Dorado, AR. She desires to pursue LNLA CNLP certification and LDAF licensing in the future.



Katharine Guitreau - LNLFSR Scholarship

Katharine is an undergraduate major in the environmental horticulture / plant and soil science curriculum in the School of Plant, Environmental and Soil Sciences at LSU. She completed an associate degree in landscape management at Baton Rouge Community College and is a student worker at Burden Center in Baton Rouge. She is a native and resident of Baton Rouge. She is active in the LSU Horticulture Club, BREADA and several other student and community groups in the Baton Rouge area.



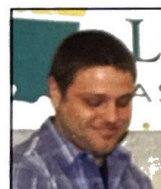
Jason Stagg - LNLFSR Scholarship

Jason is pursuing a M.S. degree in horticulture / plant and soil systems in the School of Plant, Environmental and Soil Sciences at LSU where he is working on turf and ornamental grass related projects with Drs. Jeff Beasley and Jeff Kuehny. He has a current grade point average of 4.0. He is a native of Lake Charles. Jason has a B.S. degree from LSU.



Maureen Thiessen - LNLFSR Scholarship

Maureen is nearing completion of a M.S. degree in the horticulture / plant and soil science graduate curriculum in the School of Plant, Environmental and Soil Sciences at LSU. She has a current 4.0 grade point average and is studying nursery irrigation under the direction of Dr. Ed Bush. She was born in San Jose, California and is a current resident of Baton Rouge. She is active in the LSU Horticulture Club and is a member of the Gamma Sigma Delta honor society.



Jacob Reichley - 'Foret-Meadows-Owings Scholarship Award'

Jacob is a native of DeRidder, LA and graduated from DeRidder High School in 2008. He is a senior majoring in the landscape-turfgrass curriculum in the Department of Agricultural Sciences at Louisiana Tech University. He has served as president of the Greenscape Club at Louisiana Tech and is a student worker at the campus greenhouses in Ruston. He has interned with several landscape contracting companies in Louisiana. Jacob was also a 2011 LNLA scholarship recipient.



John Hoogland - Ira Nelson Scholarship Award

John is a native of Shreveport and has been enrolled since 2009 at the University of Louisiana – Lafayette where he is currently a junior in the sustainable agriculture / landscape and horticulture management curriculum. He is a member of the Kappa Sigma fraternity and has worked many hours at the family business – Hoogland's Landscaping in Bossier City.




YOU DON'T HAVE TO CHEW IT TO LOVE IT

LOUISIANA GROWN TURFGRASS DEMAND IT

If you want the best turfgrass for your lawn or landscape, demand Louisiana Grown. Locally grown turfgrass gets from farm to yard faster, so you can establish it fresh and keep it growing green and healthy.



LOUISIANA DEPARTMENT OF AGRICULTURE AND FORESTRY | MIKE STRAIN DVM, COMMISSIONER



Native Louisiana Iris
and their hybrids provide color for water, wetland environments and perennial flower beds. Easy to naturalize, establish and maintain. Provide bloom in spring. Provide green foliage in winter. Tough field grown bare root plants.

Bois d'Arc Gardens
1831 Bull Run Road
Schriever, LA 70395
Phone: 985-446-2329
Cell: 985-209-2501

Contact: Bud or Rusty McSparrin for more information and wholesale pricing.
Web site: <http://www.bois-darc.com>
Email: bois@charter.net



POOLE BROS. NURSERY

Customer Service and Quality are Top Priorities!

Grower of Azaleas, Evergreens, Woody Ornamentals, Ornamental Grasses and Groundcovers

3334 Hwy 112 • Lecompte, LA 71346

1-866-665-6579 • (318) 748-6579

Fax (318) 748-7441 • E-mail: poolebroscopy@msn.com

Debbie Head, Owner

The superiority of our 30-, 45-, 65- and 100-gallon container-grown trees is evident in healthy trunk tissue, good architecture and strong branch attachments, but our growing quality goes much deeper — down to the roots.

Our roots run deep...

PLANT LISTING:

Live Oak	Drake Elm
Red Oak	Lacebark Elm
Chinquapin Oak	Red Maple
Burr Oak	Savannah Holly
Bald Cypress	River Birch
Magnolia	



Owner: H. Gregory Walker III
Member: LNLA, CLNA

1110 Highway 456, Lecompte, LA 71346
(318)664-8733 • Fax (318)776-7319
sales@qualitytreefarms.com



Blumberg Means Business



Making Business Secure...

One Handshake At a Time



Blumberg and Associates, Inc.

Andy Blumberg

8560 Jefferson Hwy • Baton Rouge, LA 70809

225-767-1442 800-349-1442

www.blumbergassoc.com



Property | Liability | Workers' Comp | Auto | Health | Life



Since 1988, we have specialized in field grown and container shade and ornamental trees. Our customers depend upon us to provide the finest quality trees and service available in the industry.

We continually strive to improve production and service.
Our #1 goal is to ensure quality plant material and
Complete Customer Satisfaction!

Gerald Foret Wholesale Nursery, Inc.

4214 Forrest LeBlanc Road

New Iberia, LA 70560

(337) 365-4858 • Fax (337) 364-6520

or visit us on the web at:

www.geraldforetnursery.com

Member of: LNLA, TNLA, ANA, MNA



HOME OF THE CAJUN LIVE OAK

In the News

IN MEMORIUM

The LNLA Association extends condolences to the following green industry families:

Dan Gill, in the loss of his mother, Willie Jo 'Billye' Gill on Monday, February 20, 2012. Services were held on February 24th at Rose-Neath Funeral Home in Shreveport, LA. Personal notes of encouragement can be sent to Dan at 16513 Lanes End, Prairieville, LA 70769

Remember **Dan and Christine Devenport** in the loss of her mom a couple weeks ago. Please keep them in your thoughts and prayers. Obit is at URL http://www.vincent-abbeville.com/fh/obituaries/obituary.cfm?o_id=1373269&th_id=11197.

Dr. Tom Pope, retired longtime LSU AgCenter Extension Horticulturist Specialist, passed away Thursday, March 8th. Over the years he contributed much to the green industry.



KUDOS

The LSU Horticulture Club recently won the American Society for Horticultural Science's national horticulture judging contest. The event was held at the society's annual meeting in Kona, Hawaii last October. Congratulations!

THANK YOU NOTES

Dear LNLA Scholarship Committee,

I would like to thank you all for awarding me the LNLA scholarship. As a senior in this field of study I have heard a lot about the LNLA and its works, and even receive the newsletter. This scholarship will go a long way in helping with my continuing education. I look forward to working with the LNLA for years to come; it is a great organization, and I admire the services that you all provide for people in this field.

Thanks again, Jacob Reichley

Dr. Owings,

I just wanted to thank you for selecting me for the scholarship. I am so honored and so grateful for being selected. If you could also thank the Board as well for the whole experience. The trade show was outstanding!! So much out there I haven't seen before. Again thank you so much.

John Hoogland

Awards (Continued from page 1)

Distinguished Service Award

Craig Roussel (left), formerly director of horticulture and plant quarantine at the Louisiana Department of Agriculture and Forestry, is the 2012 Louisiana Nursery and Landscape Association Distinguished Service Award winner. Presenting the award was Pat Newman (right). Craig has retired from LDAF and recently accepted a county agent position in Ascension Parish with the LSU AgCenter.



Service Award

Walter Imahara (left) and Nick Simoneaux (center) were presented certificates for their service on the LNLA board of directors. Presenting the awards was President Todd Ellefson (right).



Appreciation Award

Severn Doughty, Sr. was presented an Appreciation Award from LNLA at the association's annual breakfast meeting and awards program in Mobile at the Gulf States Horticultural Expo. Doughty has served as executive secretary of LNLA from 2006-2011. Presenting the award are Annie Coco, interim executive secretary, and Todd Ellefson, president.



MEMBERSHIP UPDATES

The 2012 LNLA dues statements were mailed December 2011. The second notice will be mailed in April. Please help us be good stewards of our time and operating budget by returning dues payments at your earliest convenience. Thank you for your support!

PROFESSIONAL LANDSCAPING



and GROWER SUPPLIES

bwi
www.bwicompanies.com

BWI is a distributor of lawn, garden and horticultural products to garden centers, farm and feed stores, hardware stores, grocery stores, regional multi-store outlets, greenhouse growers, nursery growers, landscapers, lawn companies, and other related outlets.

BWI Forest Hill
800.242.7234

BWI Jackson
800.385.2580

BWI Texarkana
800.442.8443

ABOUT PETERS | PRODUCTS | ADVANTAGES | RATE CALCULATOR | CONTACT US

PETERS' A-B-C SELECTION SYSTEM

WATER TYPE: 2

STAND ALONE PRODUCTS:

A
All-Purpose Formulation

CROP: Flowering Hanging Baskets (General)

OPTION 1
Peters Excel 15-5-15
Cal-Mag Special

OPTION 2
Peters Professional 17-9-17
Plant Life Neutral Cal-Mag

MORE **B** + **C** COMBINATION OPTIONS

E-MAIL RESULTS
Enter your zip code and e-mail address to receive your product options via email.
If you do not receive an e-mail, please check your junk mail or spam.

Zip code: _____ E-mail address: _____

Scotts
PROFESSIONAL

**MEET YOUR NEW
WATER SOLUBLE FERTILIZER CONSULTANT.**
www.PetersABC.com

Just follow a few easy directions, and this online consultant will help you:

- Define your water type
- Correlate your water type to crops you produce
- Identify your best formula options:

"A" products with single-formula feeding convenience

— OR —

"B" + "C" products for combination or rotation

PETERS
EXCEL
WATER SOLUBLE FERTILIZER

PETERS
PROFESSIONAL
WATER SOLUBLE FERTILIZER

For more information contact:

Charlie Owens, Territory Manager

(251) 621-8292

charles.owens@iclsfa.com

www.PetersABC.com

© 2010, The Scotts Company LLC, World Rights Reserved.

THE BUG DOCTOR

LACE BUGS

Lace bugs belong to the order Hemiptera and family Tingidae. There are over 150 species of lace bugs in North America and over 2100 species worldwide. These insects are herbivorous, feeding on the leaves of shrubs and trees. Their feeding injury causes yellow spots, brown areas, and leaf death.

Adult lace bugs are 1/8 to 1/4-inch long and flattened. The wings and flattened areas behind the head are sculptured, gauze-like or lace-like and make these insects appear rectangular and whitish or silvery. The nymphal stages lack fully-developed wings and appear oval, marked with blackened areas and adorned with spines.

All life stages occur together on the undersurface of leaves. The upper surfaces of infested leaves are marked with white to yellowish (chlorotic) and later brown (necrotic) speckles. The undersides of infested leaves are marked with black varnish-like excrement spots and cast skins often remain attached. Lace bug damage to broad-leaved evergreens (azalea, laurel, pyracantha, rhododendron) will be evident for more than a year unless injured foliage is removed. These species overwinter as eggs inserted into leaf veins or cemented to the leaves.

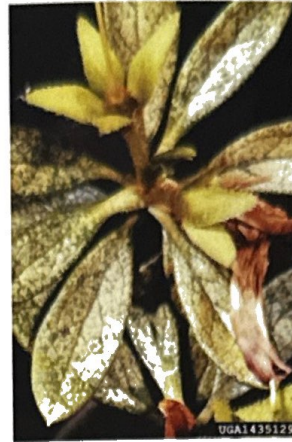
Adults become active when leaves appear. Eggs are glued to the underside of leaves. Nymphs develop through five stages. Lace bugs develop from egg to adult in about 30 days. There are three to five generations per year. Lace bugs overwinter as adults in the crevices of bark. They occur on many trees and shrubs, injuring foliage, and high numbers cause plant stress or even death. They are medically harmless.

There are about 17 species of lace bugs that injure ornamental trees and shrubs in the United States. The genus *Stephanitis* contains four species of lace bugs that feed on azaleas and rhododendrons, causing economic damage. The azalea lace bug, *Stephanitis pyrioides* is the most damaging of these four species.

The symptoms of injury on infested azaleas include bleached, stippled, silvery or chlorotic areas. The greatest concern from feeding by these insects is the aesthetic injury. Azalea lace bugs may cause a lot of injury to the leaves of azalea plants in the nursery and on established, as well as new, plants in the landscape.

The azalea lace bug is not native to North America and was introduced from Japan. It was spread with its hosts (azaleas). This insect is found in the eastern United States and has been collected in California, Maryland, Massachusetts, New York, Texas, and Virginia.

The adult azalea lace bug is about 1/10 inch long and cream-colored. The wings are held flat over the body and are longer than the body. The wings have black or brown patches and are netted and lacy in appearance. These insects are easy to overlook because of the transparent wings and small size of the insect.



1. Lace bug injury. Clemson University - USDA Cooperative Extension Slide Series, Bugwood.org

2. Nymph lace bug. Tracy Wooten, University of Delaware, Bugwood.org

3. Adult lace bug. Pest and Diseases Image Library, Bugwood.org



The eggs are white (oval or flask shaped) and about .02 inches in length and width. They have a bent neck to one side. Eggs are laid on young leaves on leaf margins or along the midrib. They are covered by an adhesive material (dark brown). This material makes a protective coating when it hardens.

At hatching, the nymph is colorless and becomes black and spiny. There are five instars and size ranges from 0.004 inches to 0.07 inches. Wing pads become visible after the fourth molt.

Eggs are laid in groups and partially embedded in leaves on the underside. They are laid on the midrib and lateral veins and sometimes on the top of the leaf. Females lay five to seven eggs per day and about 300 eggs during the adult stage. Eggs develop in 12 days at 89°F to 22 days at 69°F.

After emergence, nymphs feed in small clusters near the empty eggshells. They develop through five instars in 10.5 days at 89°F to about 23 days at 69°F. Thus, the development from egg to adult is about 22 to 45 days at these temperatures. Adults live from one to four months. There are two to four generations per year and the egg is the primary overwintering stage.

The nature of damage caused by the nymphs and adults is piercing leaf tissue and removing the contents of the cell. The nymphs and adult males cause less injury than the adult females. The chloro-

(Continued on page 22)



Article written by Dr. Dennis Ring, Professor of Entomology,
LSU AgCenter, Baton Rouge, (P) 225. 978.3881, (E) dring@agcenter.lsu.edu

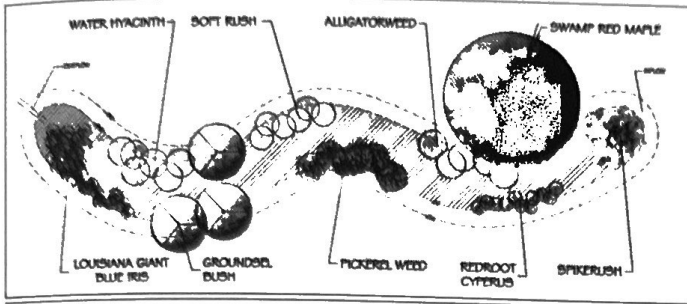


Fig. 2.0 Landscape Design for a Bioswale, Abbey Associates, Inc Drawing 2010

Landscape Design Sketchbook (Continued from page 10)

Bioswales are vegetated open channel water management practices designed specifically to treat and attenuate storm water runoff for a specified volume of runoff

Storm water falling on development sites flow through these channels and is treated through vegetation filtering, filtering through a prepared porous subsoil mix, and/or infiltration into underlying native soils. Vegetated filters or swales in parks and recreation fields not only will convey storm water to areas of disposal but will slow the runoff and allow more infiltration within its base or along its side slopes.

Vegetation, primarily native grasses, forbs, herbs and ground covers lining the channel reduce the flow velocity of concentrated runoff. Grassed channels can be designed to control peak runoff. If carefully worked into a landscape plan, ground shaping and swales designed for water management can be part of a designed integrated open space network. They are often used in combination with other BMPs, such as subsurface sand filters, retention ponds, constructed wetlands and infiltration trenches.

Richly designed and planted vegetated bioswales become the means of conveyance as well as a vessel of infiltration.

As seen in Fig. 1, 2 and 3 Bioswales are open channels designed using ornamental plants, various grasses and herbaceous wetland material to filter the storm water flow prior to its temporary storage in a detention. Long cut turf grass generally is used near the head of the swale followed by sections of high cut meadow grass and then filtering herbaceous plants near the inflow point of a detention.

The filtering plants at the end of the swale should sufficiently slow the flow of water that armoring is not required. If it is, riprap armoring over filter fabric can be used. If a stronger flow rate is predicted, then a concrete water ramp may be necessary.



Fig. 3.0 Bioswale at The Muses in New Orleans, Keith Scarmuza Landscape Architect 2011

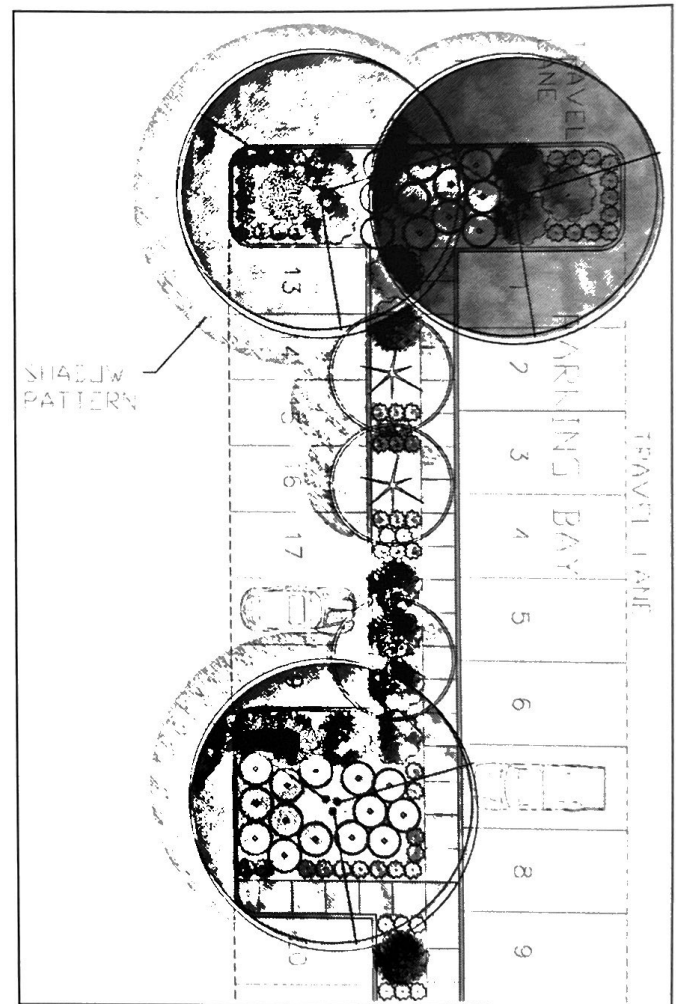


Fig. 1.0 Landscape Design for a Bioswale, Abbey Associates, Inc Drawing

Should readers like to contact Abbey, get in touch at lsugreen-laws@aol.com. You may call at the Robert Reich School of Landscape Architecture at 225.578.1434.

12th ANNUAL Nursery and Landscape GOLF SHOOTOUT



Friday June 15, 2012

Registration 7:00 - 8:15 am

Shotgun Start at 8:30 am

Entry Deadline: Tuesday May 3rd

LSU Golf Course

Nicholson Drive at Burbank Drive

Baton Rouge, LA



Format

4-person scramble. Gift certificates awarded for first, second, and third place. Multiple flights will be formed if a sufficient number of teams enter. Individual entries and team entries accepted (maximum of one single digit handicap player per team). Red blaster holes, closest to pins, long drive contests, etc. are included.

Entry Fee

\$50 / person or \$200 / team. Includes green fee, cart, range balls, refreshments, lunch, prizes, and 2 mulligans / person. Individual entries accepted - will assign teams if needed.

Sponsorship Opportunities

\$150 / hole. Includes tee box sign, recognition in shootout program, and complimentary listing in Louisiana Nursery and Landscape Association quarterly newsletter and magazine. Sponsorship includes one player's entry.

Registration

Team Entry or Individual Entry (please circle to indicate)

Player _____ Handicap or Average Score _____
Address _____

Player _____ Handicap or Average Score _____
Address _____

Player _____ Handicap or Average Score _____
Address _____

Player _____ Handicap or Average Score _____
Address _____

Sponsorship

Attach Business Card (if available / applicable)

Company Name _____ Contact Person _____

Address _____

Phone _____ Fax _____

Attach check or money order payable to "Nursery and Landscape Fund" and forward to: Allen Owings, LSU AgCenter, 21549 Old Covington Highway, Hammond, LA 70403. For further information contact Allen Owings at 225.603.8096 (aowings@agcenter.lsu.edu) or Ed Bush at 225.578.1044 (ebush@agcenter.lsu.edu). Registration deadline is June 11, 2012. All proceeds benefit LSU AgCenter nursery/landscape research and extension efforts.

POSTEMERGENCE HERBICIDE OPTIONS ARE LIMITED FOR NURSERIES AND LANDSCAPE BEDS

At this writing, we are having a real nice pre-Valentine's Day cold snap. Cold weather like this is so temporary in Louisiana. Weeds on the other hand are not temporary but an ongoing any-season problem for nurseryman and landscape managers. Sometimes we spray non-selective herbicides like glyphosate to take out weeds but it is really pretty risky to spray herbicides near landscape and nursery plantings. I was spraying glyphosate carefully on some winter weeds in my landscape beds today and accidentally sprayed an agapanthus, my last one. Normally, I wouldn't spray glyphosate in my beds. My thirteen year old son is typically out in the flower beds pulling weeds as punishment for bad grades, target practicing with his BB gun...in the house, or for trying to "kill" his sisters. Through repetition he has really honed his skills and I put him among the best weed pullers that I have ever seen. I had the cleanest flower beds in my neighborhood mainly because he has been good for at least a weekly visit to the beds for the past several years. Unfortunately, his behavior and grades have improved and my flower beds are really suffering.

Not everybody has the luxury of a misbehaving thirteen year old to help them manage weeds. Wouldn't it be great to just be able to spray a selective postemergence herbicide and cure all of our weed problems? Unfortunately, postemergence herbicide options are extremely limited. Because of the high value of the crops and their potential sensitivity to postemergence herbicides, less injurious preemergence herbicides are the backbone of weed control in nurseries and flowerbeds. There are a few somewhat crop specific selective postemergence options available that you may not be familiar with. Take a look at the options below and see if any of the following herbicides might fit in your overall weed management plan. As with all herbicides, it is important to read and understand product

labels before using.

Bentazon – (Basagran, Lescogran etc.) - Bentazon provides good control of yellow nutsedge (poor on purple nutsedge), *Kyllinga* spp., spreading dayflower, and small eclipta. A few plants listed in the product label that will tolerate over the top applications include ajuga, several cultivars of hollies and liriope. Bentazon may also be applied as a directed spray around most plants as long as care is taken not to contact foliage. The herbicide may also be used in landscape plantings.

Clopyralid (Lontrel) – Lontrel is a very effective postemergence herbicide on legume (clovers) and asteraceae (thistles and asters) families. The herbicide can be applied to several species of pines, juniper, ornamental grasses and field grown lilies. There are a few deciduous plants on the product label also. Consult the product label for a list of tolerant plants. This herbicide may be applied as spot treatment in landscape plantings. However, Lontrel cannot be used in container plantings.

Glyphosate (Roundup and others) – Glyphosate is often used for site preparation or as a carefully directed spray in ornamental plantings. However, most of you have had an occasion where spray drift has damaged your crop. I feel your pain. Even the most careful applicator will injure desirable plants. Should you try directed sprays, reduce sprayer pressure and use some type of hood if possible. High pressure causes finer spray droplets increasing chances for spray drift. Avoid using glyphosate on thin or pigmented-bark trees. One way to

(Continued on page 22)

THE SECOND GENERATION

Danny LaFleur, President
Mike LaFleur, Sec./Treas.
Yvette Smith, Office Sec.
721 Goyo Road
Washington, LA 70589
(P) 800.447.6951
(F) 877.826.9955
(E) lafleurdanny@yahoo.com

Over 50 Years...
of SUCCESS!

LaFleur's Nursery, Inc.

"Quality Is Our Specialty"



Palms
Oaks
Crape Myrtles
Hollies
Ligustrum
Loquat
Magnolia
and more....!

180 Acres of Clean & Attractive... Field-grown Trees & Shrubs

Postemergence Herbicide (Continued from page 21)

escape drift injury with glyphosate is to use the herbicide as a wipe on weeds. The glyphosate concentration in a wipe solution should be at least 15% glyphosate. For difficult weed species consider 20 to 30% glyphosate concentrations.

Postemergence Grass Killers (fluazifop, sethoxydim, clethodim) – Controlling summer annual grasses postemergence should rarely ever be an issue in nursery production or landscape beds. Most non-grass plants including liriope, mondograss, and daylilies are tolerant of over-the-top applications of these the grass killing herbicides with a few exceptions (double check product labels). Perennial grasses like bermudagrass (*Cynodon dactylon*), vaseygrass (*Paspalum urvillei*), and dallisgrass (*Paspalum dilatatum*) can be more difficult to control and may require multiple applications. None of these work that good on torpedograss (*Panicum repens*). Fluazifop is a little better than sethoxydim on torpedograss but several repeat applications would be needed to provide suppression of this difficult perennial grass. I usually end up wiping torpedograss with glyphosate.

Sedge killing herbicides halosulfuron (Sedgehammer), sulfosulfuron (Certainty), and imazaquin (Image) – Postemergence sedge killers such as Sedgehammer, Image, and Certainty can only be used in non-production areas of container nurseries. However, all these products can be used in landscape plantings. Sedgehammer and Certainty are labeled for directed sprays around all woody ornamentals in landscapes. Recently, their labels were expanded or supplemental labels were added that allow for Sedgehammer and Certainty to be applied over the top of several landscape plants. Take a look at their latest labels for Sedgehammer and Certainty. Image may be applied over the top of several ornamentals including liriope, mondograss, jasmine, and Indian hawthorne. Be careful with Image around azaleas and roses.

Flumioxazin (Sureguard) – Sureguard might be thought of as mostly a preemergence herbicide. However, I was very impressed with the postemergence activity of this herbicide in production and non-production areas in some of my demonstration plots over the years. The herbicide is extremely active on doveweed (*Murdannia nudiflora*), a frequent problem in areas that stay wet in the nursery. Doveweed is an annual monocot that is similar to spreading dayflower and a weed that is becoming more common in nurseries and landscapes. Glyphosate (Roundup or generics) has almost no activity on this particular weed. *Eclipta prostrata* is a hard to control plant that is also listed on the product label as a controlled species. Most nurseries have at least a moderate infestation of eclipta. Sureguard can be tank-mixed with glyphosate to provide broad spectrum postemergence control.

Although Sureguard may be used in container production, it probably has a better fit as a directed spray in field tree and shrub production. Broadstar is the granular formulation of flumioxazin that probably fits shrub and tree container production best. That being said, I believe that Sureguard has a great fit in keeping difficult weeds under control in and around production areas of container nurseries. Both of these formulations of flumioxazin are labeled for landscape beds.

Bottom line, when you are using any of the above mentioned postemergence herbicides, you have to really be diligent about reading product labels. Check out the product labels on the www.cdms.net website. Looks like I will be trying a lot more herbicides in my flowerbeds as well thanks to my son's apparent reformation. I told him "if you get your grades up and start acting better, you won't have to pull weeds." It just never really occurred to me that he would actually take me up on it. Why couldn't I have said "if things improve, you will get your BB gun back?"

Lace Bugs (Continued from page 18)

phyll is removed near the upper surface of the leaf resulting in areas that are bleached, stippled, and silvery or chlorotic. If leaves are severely damaged they become very discolored and fall off. The leaves also have a brown varnish-like excrement and cast skins on them.


Aesthetics are very important for nursery crops. Injury early in the season on azaleas may result in loss of aesthetics for the entirety of the growing season. Thus, early season management of lace bugs is important.

Monitor plants weekly in the spring, summer and fall for lace bugs. Initial symptoms of injury may be hard to see. Thus, the undersides of leaves should be inspected with the use of a hand lens or other magnification. Another method of monitoring for lace bugs involves beating the leaves and collecting the insects that fall from the leaves on a white piece of paper or paper plate.

Plants should be kept healthy and stress reduced through proper fertilization and watering and growing azaleas where it is shady. There may be a greater rate of predation on lace bugs when azaleas are in the shade resulting in the appearance of greater lace bug injury on azaleas grown in sunny areas. Some lace bugs may be knocked off of the undersides of leaves using a jet of water from a garden hose. However, lace bugs remaining on the leaves and crawling back onto the plant will cause injury.

Monitoring for lace bugs should begin in the spring when the first generation appears. The application of an insecticide is recommended if injury is observed on more than 15 % of the foliage. Insecticides to be considered include insecticidal soap, several synthetic insecticides, neem oil, and horticultural oil. Systemic insecticides may be used and will usually last longer but may act slower. Spray plants until the leaves are wet or to run-off. It is important to make a thorough application to the undersides of leaves because that is where the majority of the lace bugs are. Read and observe the label.

News, Views, Thank Yous (Continued from page 4)

 January 4, 2012


LNLA Board Members,

I wish to thank LNLA for the very generous donation of \$10,000 provided for research efforts at the Hammond Research Station. In this time of state budget cuts, your donation and support is especially needed and appreciated. Knowing the state organization supports our efforts at the Station is very gratifying to Allen Owings, Yan Chen, and me.

Thanks again for your support. Please visit our station often. Remember, we are here to serve you!

Regina Bracy

Resident Coordinator, Hammond Research Station

 January 24, 2012

Good afternoon Allen (Owings)!

I wanted to personally thank you for taking the time to present me with the award at the 5:00 dinner. I was not expecting that but certainly appreciate it very much. I am honored to receive this award and will do all I can to continue to present the characteristics expected of a recipient chosen for this honor. I have a fondness for our industry, and our states key people involved that many people are never lucky enough to embellish.

Thanks to you and everyone that was part of the GSHE and LNLA.

Thanks again!

Carruth Higgins, Bayou Scape, Addis, La.



**MINUTES LNLA BOARD OF DIRECTORS MEETING
WEDNESDAY, DECEMBER 7, 2011, 10:00 A. M.
PAT'S RESTAURANT
HENDERSON, LA**

The meeting was called to order at 10:07 A.M. by President, Todd Ellefson. Regular voting members present were: Gerritt Monk, Rick Cicero, Renee` C. Vanlangendonck, Robert Lee, John R. Kavanaugh, Margie Ann Jenkins, Mark Murrell, Pete Newton, Todd Ellefson, Pat Newman, Nick Simoneaux and Severn C. Doughty, Sr. Non-voting Board Members present were Walter Imahara, Brian Bridges and Allen Owings. Guests present were Craig Roussel, Ansel Rankins, and Dennis Ring. Seven Regular Members and Officers of the Board of Directors constituted a quorum and 12 were present.

Todd welcomed everyone and asked them to stand for the Pledge of Allegiance. Afterwards he asked each Board Member to review the Minutes of the last Meeting and if acceptable, move that they be accepted. Gerritt Monk moved, seconded by Rick Cicero, to accept the Minutes. Motion carried.

Todd asked Pat Newman to present the financial report. Revenues budgeted for the year were \$91,400 and actual ytd revenues were \$101,748, a \$10,348 increase over budget. Budgeted expenses for the year were \$92,900 and actual ytd expenses were \$92,814. The checking account balance was \$38,128.30. There being few comments, Pete Newton moved, seconded by Margie Ann Jenkins, to accept the financial report. Motion carried.

Todd asked Pat to report on GSHE. Pat indicated there were some preliminary discussions about possibly moving the GSHE Show to Biloxi, MS in two years after the contract with the Arthur Outlaw Convention Center expires. Some of the Board Members indicated that it would be a good move.

Todd asked Severn to give the membership report. Severn stated that we had picked up about 5 more members since the last Board Meeting. The total now was about 431. He further indicated that he had a request from the New Jersey Nursery Executive asking if we had an idea of what percentage of the industry in LA were LNLA members. Severn responded by stating that in Louisiana we had licensed landscape horticulturist, licensed landscape architects and persons with nursery grower's permits. Of the licensed landscape horticulturists of which there were a total of 1,998, 68 were from out-of-state and after removing the out-of-state license holders of which none were LNLA members, that left a total of 1,930 licensed, in-state landscape horticulturist. LNLA had 114 members which was 6% of the total licensed landscape horticulturists in Louisiana.

Louisiana had a total of 368 licensed landscape architects of which 155 were from out-of-state. There were no LNLA members in this group. So that left 213 that were licensed in state. LNLA had 17 that were members which was 8%. Finally, Louisiana had 683 persons with nursery grower's permits. LNLA had 95 growers who were members which was 14% of those with a permit.

Todd asked Allen Owings for an LSU AgCenter update. Allen indicated that Jeff Kuehny held the annual poinsettia open house early in December where he had consumers evaluate about 20 cultivars. Allen recommended that LNLA ask Jeff to write a newsletter article on new poinsettias cultivars in the spring of 2012. Since the Louisiana Super Plant Program received more grant money, future Super Plants will include: Spring 2012; Cleome 'Senorita Rosalita', Begonia - Baby Wing series, and Hydrangea 'Penny Mac'; Fall 2012; Viola - Sorbet series, Azalea 'Conversation Piece', and Evergreen Sweetbay Magnolia; Spring 2013; Alternanthera 'Little Ruby', Lantana - Bandana series, and Althea 'Aphrodite'; Fall 2013; Delphinium 'Diamonds Blue', Rose - Drift series, and Willow Oak.

Tentative plans are being made for the Hammond Research Station to host a social and joint meeting of the New Orleans Horticulture Society, the Baton Rouge Landscape Association, the Louisiana Irrigation Association and SELNA sometime in the spring of 2012.

Todd moved on to Committee reports. He asked Robert Lee to report on funding. Robert asked Severn if he had received any requests and Severn said he had just received some from FFA and HRI. Severn handed Robert the requests.

Todd asked Gerritt Monk for a Membership Committee update. Gerritt stated that he had been in contact with Home Depot, Stines and several lumber yards that sell plants to see if they would be interested in joining LNLA. Todd indicated that the joint membership drive/meeting at Perino's Garden Center was a very nice event with about 30 people in attendance and Robert Lee stated the same. Severn indicated that to date there were no memberships received as a result of the meeting.

Todd asked Pete Newton for a report on the Nominating Committee, consisting of Pete Newton, Chair, Gerritt Monk and Buddy Perino. Pete indicated that the committee had no recommendations for the Honorary Membership category. For Young Professional of the Year it was decided that Allen Owings would present the award. For Professional of the Year, Walter Imahara would present the award. For Professional Achievement Award, Distinguished Service Award and the James A. Foret Award the presenters will be assigned later.

Recommendations from the Nominating Committee for the slate of Officers and Board of Directors nominations for 2012 were as follows: Todd Ellefson will remain as President, Gerritt Monk will remain as Vice-President, Pat Newman will remain as Treasurer and

(Continued on page 24)

LNLA Minutes (Continued from page 23)

Pete Newton will remain as Past President.

The New Board Members will include: Walter Imahara will stay as Emeritus Board Member for another term, Brian Bridges will stay as Allied Board Member for another term, Board Members, Mark Murrell, Margie Ann Jenkins and Robert Lee will stay Board members for another term and Tom Fennell will come on as new Board Member. Retiring from the Board will be Nick Simoneaux. There being little discussion Mark Murrell moved, seconded by Rick Cicero, to accept by acclamation the Nominating Committee's recommendations for Officers and Board of Directors for 2012. Motion carried.

Todd asked Allen Owings to report on the LNLA website. Allen stated that the redesign was almost complete and the site looked good.

Todd asked Pete Newton to report on the Newsletter Committee. Pete stated that the newsletter looked good and that the committee would like to meet with Severn and Laura so the committee could give them direction as to which articles to place in there for 2012.

Todd then asked Severn and all non-voting Board Members to leave the room so the Executive Secretary Review Committee, consisting of Todd Ellefson, Gerritt Monk, Pete Newton and Allen Owings could give their report on Severn's review to the voting Board Members. (Allen Owings took minutes – "Moved John Kavanaugh, seconded by Rick Cicero to accept report of the Executive Secretary Review Committee and to proceed forward in a positive manner. Passed unanimously." The committee recommended that Severn Doughty, Sr. be retained as LNLA executive secretary and provided the board members a written summary of the evaluation. A copy of the review is on-file.

Todd moved on to Old Business and asked Gerritt Monk to report on the CENLA Work Ready Network. Todd indicated that they were still trying to get sponsorship.

Todd moved on to New Business and asked Severn to discuss Business Coach Offers Online Coaching Academies. The Goldhill Internet Academy supposedly helps entrepreneurs and small business owners market their business online.

There being no motion on the floor or interest in further discussion, Todd moved on to selecting nominees for the Horticulture Commission representing Wholesale Nurseryman. Three names were recommended in prioritized order: Rob Barry, Todd Ellefson and Mark Murrell. Severn will write a letter to Commissioner Mike Strain making the recommendations.

Todd asked Craig Roussel to give an update on LDAF. Craig indicated that progress was being made on the exhibit that LDAF would have at GSHE and Craig stated that there was a possibility that he would retire in January, 2012.

Todd stated that he had an announcement to make:

"December 5, 2011

To the President and Board of Directors of LNLA

Effective December 31, 2011, I will resign my position as Executive Secretary of the Louisiana Nursery and Landscape Association. You have until December 31, 2011 to remove all LNLA property from my premises.

Regards,
Severn C. Doughty, Sr."

At the same time Severn handed Pete Newton a letter of resignation from LNLFSR, effective immediately.

There being no more business, Pete Newton moved, seconded by Robert Lee to adjourn the Meeting. Motion carried and the meeting concluded at 1:25 P.M.

After the close of the Board Meeting Todd asked for the Officers and Board of Directors to remain to discuss Severn's resignation and how the Board would handle it.



12th Annual Nursery and Landscape Golf Shootout

LSU Golf Course ♦ Nicholson Drive at Burbank Drive ♦ Baton Rouge, LA

Friday June 15, 2012

Registration 7:00 - 8:15 am,

Shotgun Start at 8:30 am

Entry Deadline: Tuesday May 3rd

Entry Fee: \$50 / person or \$200 / team. Includes green fee, cart, range balls, refreshments, lunch, prizes, and 2 mulligans / person. Individual entries accepted - will assign teams if needed.

Sponsorship Opportunities: \$150 / hole. Includes tee box sign, recognition in shootout program, and complimentary listing in Louisiana Nursery and Landscape Association quarterly newsletter and magazine.

For further information contact Allen Owings at 225.603.8096 (aowings@agcenter.lsu.edu) or Ed Bush at 225.578.1044 (ebush@agcenter.lsu.edu).
Registration deadline is June 11, 2012. All proceeds benefit LSU AgCenter nursery/landscape research and extension efforts.

MINUTES OF LNLFSR BOARD OF DIRECTORS MEETING
Newton Landscape Group, Baton Rouge
FEBRUARY 13, 2012

The meeting of the LNLFSR Board of Directors was held on Monday, February 13, 2012, at the office of Newton Landscape Group, Baton Rouge, La. Total attendance was 7 people. Board Members attending were: Annie Coco, Tom Fennell, Danny LaFleur, Pat Newman, Pete Newton, Allen Owings, Rusty Ruckstuhl. Absent were: Todd Ellefson, Rick Webb.

President Pete Newton called the meeting to order at 4:15 pm.

Minutes of Last Meeting

The minutes of the last Board meeting on Oct. 12, 2011, were handed out by Annie Coco and reviewed by those present. They had also been emailed prior to this meeting. Danny LaFleur motioned to accept minutes of Oct. 12 meeting; second by Tom Fennell; motion carried.

Financial Report

Pat Newman provided copies of the financial report. We have already placed \$60,000 in Savings and received the interest on that, did that last year. Now we are transferring 60% of the (2) Galas after expenses and 60% 2011 GSHE Auction (no expenses) along with \$9,000 given by Allen into that Savings account for a total of \$43,421 increase. That leaves us with \$10,460 in the LNLFSR checking account for office and Gala up front expenses.

\$15,024.20 GALA 1 Oct. 2010 (60%)

\$ 1,198.80 GSHE Jan. 2011 (60%)

\$18,218.40 GALA 2 May, 2011 (60%)

\$ 9,000.00 Allen Owing (We gave the first scholarship out of this donation, January 2012)

\$43,421.40

Total transferred to savings \$43,421. Total left in checking \$10,460. Allen Owings motioned to accept financial report; second by Rusty Ruckstuhl; motion carried.

2012 Budget

Pat Newman provided copies of last year's budget, income, and expenses. The Board discussed and worked up a budget for this year with total income projected at \$51,500 and total expenses projected at \$35,300. Discussion on investing in CD or savings; agreed on savings. Will need to buy stamps, send invitations to gala, and office expenses. After Gala III, will see if can fund more of Hammond Research Station request last year. Allen Owings motioned to approve budget; second by Rusty Ruckstuhl; motion carried.

Scholarship Report

Allen Owings reported 7 scholarships were awarded at GSHE; we have gotten thank you notes from several. Allen is working on follow up on prior scholarship recipients. Suggested that Pete Newton do an update or letter on importance of the gala and LNLFSR for each LNLA newsletter.

Research Report

\$10,000 was given last year to Hammond Research Station; hopefully another \$10,000 this year after gala.

GSHE Silent Auction Results

Allen Owings provided copies of the list of items auctioned and how much each brought in. Letters for those who gave more than the value of each item have been sent. More items will be solicited in the future. Gift certificates are good items, but minimum bid should be at least half the value of the certificate.

2012 Gala

Discussion on date for next gala; Saturday or Friday night preferred; Baton Rouge or New Orleans; LSU stadium club or faculty club. Entertainment/speaker choices were discussed. Decorations and music are needed, as well as good auction items. Allen will make a list of prior donors; will seek donors/sponsors. Preferred date June 22, 2012 (Friday) at LSU Stadium Club (1st choice if not too expensive) with entertaining speaker.

Set Date/Location for Next Board Meeting

Agreed on March 12 in Baton Rouge, 4 pm, probably Newton Landscape office.

2012 Committee Assignments

Gala Committee is entire LNLFSR Board.

Funding Request

Annie Coco reported she received a request for funds to help support LSU AgCenter Ag Magic event; had been referred to LNLFSR by Todd Ellefson; LNLFSR Board agreed needs to go back to LNLA Board.

There being no further business, meeting was adjourned at 6:20 pm.

CALENDAR OF EVENTS

April 2012 - December 2012

- April 13-14 New Orleans Spring Garden Show**
City Park Botanical Gardens, New Orleans, LA
Contact: Russell Harris, (E) ruharris@agcenter.lsu.edu
- April 25 LNLA Board of Directors & Officers Meeting**
Ralph & Kacoco's Restaurant, Baton Rouge, LA
Contact: Annie Coco, (P) 985.789.4301, (E) acoco@agcenter.lsu.edu
- April 28 Roses & Horticulture—New Roses for New Gardeners**
American Rose Center, Shreveport, LA
Contact: Allen Owings (P) 225.603.8096, (E) aowings@agcenter.lsu.edu
- May 12 Green Industry Association's Open House**
Hammond Research Station, Hammond, LA
Contact: Allen Owings (P) 225.603.8096, (E) aowings@agcenter.lsu.edu
- Jun 6-7 LIA Irrigation Basics Certification & Re-Certification**
Ralph & Kacoco's Restaurant, Bluebonnet Blvd., Baton Rouge, LA
Contact: Severn Doughty, Sr., (P) 318.872.4677,
(E) scd357@cmaaccess.com
- Jun 15 Nursery & Landscape Golf Shootout (see pg. 24)**
LSU Golf Course, Baton Rouge, LA
Contact: Allen Owings (P) 225.603.8096, (E) aowings@agcenter.lsu.edu
- Jun 19-20 Mid South Green Industry Conference**
Muse Center, 3805 Hwy. 80 E., Pearl, MS
Contact: MNLA, (P) 601.919.8111, (E) halevmsnla@aol.com
- Jun 22 LNLFSR Fund Raising Gala III**
Stadium Club at Tiger Stadium, Baton Rouge, LA
Contact: Allen Owings (P) 225.603.8096, (E) aowings@agcenter.lsu.edu
- Jun 28 Horticulture Field Day**
Texas A&M, Overton, TX
Contact: Brent Pemberton, (E) b-pemberton@tamu.edu
- Jun 30 Burden Center Garden Festival**
Burden Center, Baton Rouge, LA
Contact: Jeff Kuehny, (E) jkuehny@agcenter.lsu.edu
- July 14 Roses & Horticulture—Propagation & Hybridizing**
American Rose Center, Shreveport
Contact: Allen Owings (P) 225.603.8096, (E) aowings@agcenter.lsu.edu
- July 25 LNLA Board of Directors & Officers Meeting**
Pat's Restaurant, Henderson, LA
Contact: Annie Coco, (P) 985.789.4301, (E) acoco@agcenter.lsu.edu
- Aug 2-3 Certified Nursery & Landscape Professional Review/Exam**
Ira Nelson Horticulture Center, 2206 Johnston St., ULL, Lafayette, LA
Contact: Annie Coco, (P) 985.789.4301, (E) acoco@agcenter.lsu.edu
- Oct 4 Ornamental Horticulture Field Day**
MSU, South MS Branch Experiment Station, Poplarville, MS
Contact: Gene Blythe, (P) 601-795-4525
- Oct 10 LNLA Board of Directors & Officers Meeting**
Hammond Research Station, Hammond, LA
Contact: Annie Coco, (P) 985.789.4301, (E) acoco@agcenter.lsu.edu
- Oct 11 Landscape Horticulture Field Day**
Hammond Research Station, Hammond, LA
Contact: Regina Bracy, (E) rbracy@agcenter.lsu.edu
- Nov 7-8 LIA Irrigation Basics Certification & Re-Certification**
Ralph & Kacoco's, Baton Rouge, LA
Contact: Severn Doughty, Sr., (P) 318.872.4677,
(E) scd357@cmaaccess.com
- Dec 5 LNLA Board of Directors & Officers Meeting**
TBA, Baton Rouge, LA
Contact: Annie Coco, (P) 985.789.4301, (E) acoco@agcenter.lsu.edu

Executive Secretary Position (Continued from page 5)

- Maintain all records, correspondence, and historical records of the association.

Work with industry members, associations, and organizations on educational program opportunities, certified nursery and landscape professional training, industry promotion and other activities as assigned by the board of directors.

Some previous work and/or volunteer experience in association management or similar activities are desirable. Applicants should have computer skills (word processing, email, financial record keeping) and be willing to obtain further training as needed in this area. Some travel (in state and 3-4 out of state meetings annually) is required. Ability and willingness to manage LNLA activities from a home based office (or similar situation) is desired.

Application Deadline: April 15, 2012

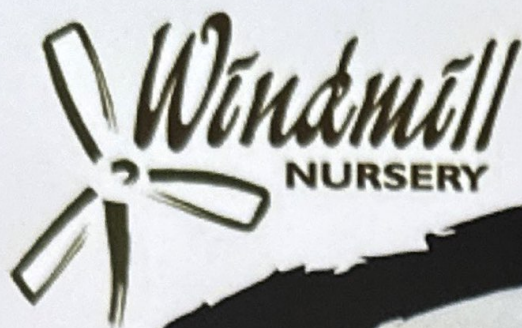
Date Available: July 1, 2012 with possible earlier hiring

Forward Application Information: Include application cover letter, resume, and listing of professional references to: Louisiana Nursery and Landscape Association, Attn: Executive Secretary Search Committee, 21549 Old Covington Highway, Hammond, LA 70403.

For Additional Information: Allen Owings 225.603.8096, Mark Murrell 225.545.3336, Buddy Perino 504.834.7888, Pete Newton 225.756.4321, Margie Ann Jenkins 985.748.7746.

The Louisiana Nursery & Landscape News is the official publication of the Louisiana Nursery & Landscape Association, Inc. Contact LNLA's Editors if you have green industry news, announcements, have questions or comments concerning it's content. Visit our website at www.lnla.org.

The Louisiana Nursery & Landscape Association is a non-profit organization devoted to serving the 'green industry' in Louisiana. However, according to the IRS, contributions made by donors are NOT tax deductible. This publication is not copyrighted. Consequently, it can be copied and used freely. However, the editors request that when copies are made or distributed, that credit be given to the publication and it's authors, including the date the information was published in the newsletter.



Growing Value
Growing Selection
Growing Satisfaction
Growing to Serve You

Price

Selection

Service

Quality

800-535-1887

Windmill Nursery 12398 Hwy. 25 Folsom, LA 70437



Don't guess. Soil test!

AgCenter Soil Testing & Plant Analysis Lab

Learn the right combination of fertilizer, sulfur, lime or other ingredients for your soil. The LSU AgCenter Soil Testing Lab is the only lab that makes fertilizer recommendations based on Louisiana-specific research. For more info, visit: LSUAgCenter.com/SoilTest

www.lnla.org

BRACY'S

Reliable. Consistent. Effective. Service.

wholesale plants to garden centers and the landscape industry

Retail Quality
Broad Selection
On-time Delivery
Customer Support

Can you afford anything less?



(p) 800-899-4716 • (f) 985-748-9955
sales@bracys.com